

Telia Smart Public Transport

# Positioning

## Realtime overview of your fleet

Receive a comprehensible overview of the vehicles' real-time positioning. Where they are, their direction and status. Valuable information that will help you optimize your operations, redistribute your resources and timetable estimation.

### See your vehicles in real time

Log in via the web to access a map that provides an updated view of individual vehicles or predefined groups. You can easily see the vehicles' locations, driving directions, speeds, and whether they are parked or moving. This real-time, comprehensive overview of all vehicles in the field is invaluable for optimizing and redistributing resources.

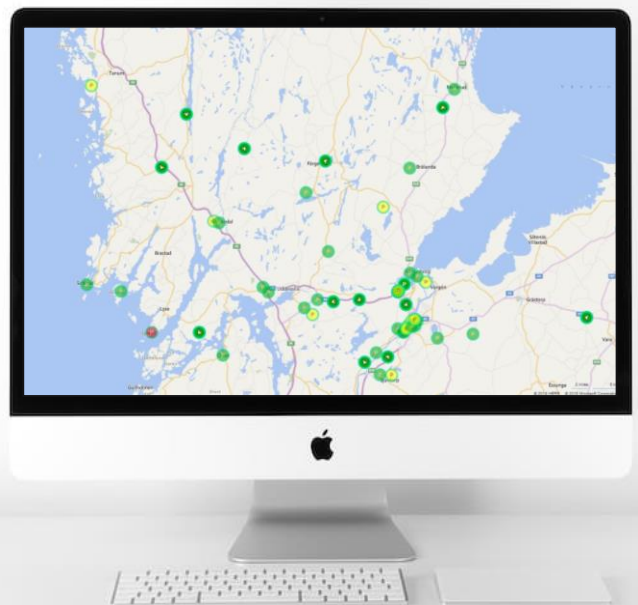
### ...or using historical data

Historical data is securely stored and quick and easy to access when you wish to see past positions and routes.

Use Telia's map view or integrate collected data to own or third-party systems.

### Key benefits

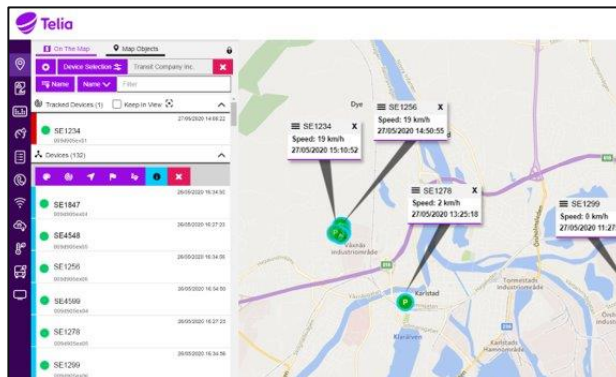
- Real-time positioning information
- API integrate with business support systems
- Better fleet management and positioning information for timetable estimation
- Optimize resource distribution and usage



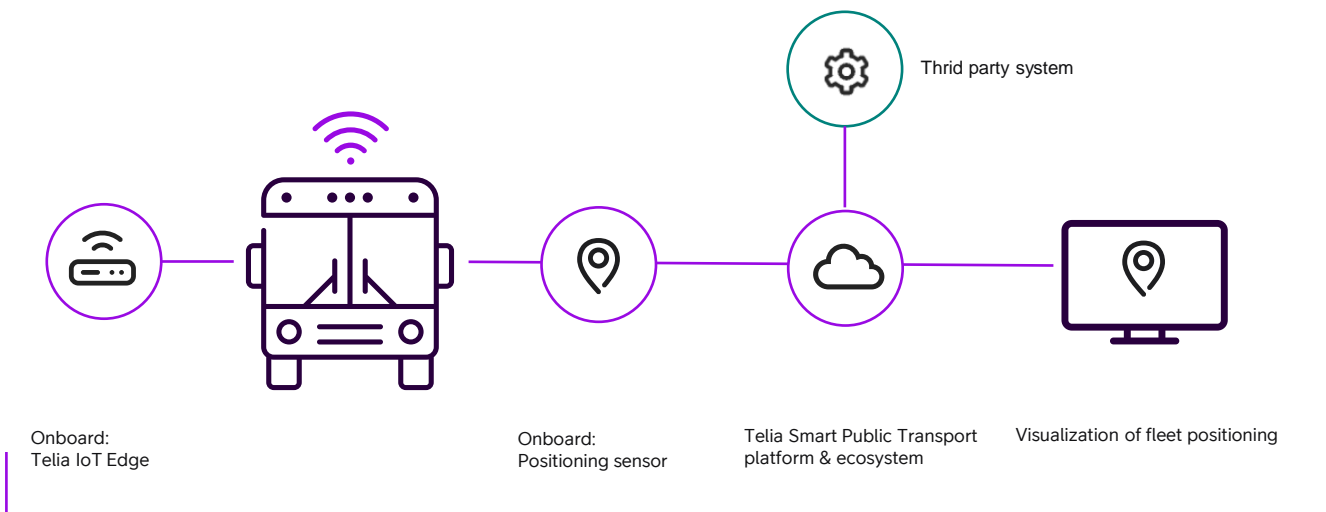
## How Positioning work

Positioning is a service that runs on the Telia Smart Public Transport platform and is connected via Telia IoT Edge; our powerful onboard edge processor and gateway. Telia IoT Edge delivers real-time data to drivers and to the cloud.

A GPS-equipped Telia IoT Edge is installed in each vehicle and registered with the vehicle ID. The position and status of the vehicle are sent in real time over the mobile network to the Telia IoT platform, where the information is processed. If the unit's connection to the server is lost, for example due to a disturbance in the mobile network, the information is stored in the unit and transmitted when the connection is restored.



You can access the information over the cloud-based customer portal, which gives you an overview of all your vehicles via both a map view and in list form. The flexible permissions manager allows you to indicate which resource has access to what type of information.



End-to-end security, reliability & support

## Consolidate your IT systems to one open platform

Telia IoT Edge is a powerful onboard edge processor and communication gateway. It is retrofittable and connects onboard systems and devices to the cloud. This makes it possible to download vehicle data, control, survey, update and configure IT-systems in the vehicle remotely. Telia IoT Edge combines robust, maintenance-free design with reliable and open software and application.

With an open platform, APIs and standards; you can easily integrate your own services – or add third party applications. So you can make the most of whatever the future brings.

## Technical components: Telia Positioning

<b>Onboard unit</b>	Telia IoT Edge (MIIPS)
<b>Xml push</b>	Reporting to third parties